

# Sony NXCAM Product Workflows

---

in Apple Final Cut Pro7

# Table of Contents

<b>1- Introduction</b> . . . . .	<b>3</b>
HXR-NX5U and the NXCAM™ Product Line . . . . .	3
Flexible Selection of Recording Media . . . . .	3
Dual Memory Card Slots . . . . .	3
HYBRID Recording with the Sony HXR-FMU128 . . . . .	3
Flexible Recording Format Selection . . . . .	5
Recording Time . . . . .	6
NXCAM Folder Structure and File Names . . . . .	6
Archiving Original NXCAM Media . . . . .	8
Archiving Example . . . . .	8
<b>2- Key workflow features in Final Cut Pro7</b> . . . . .	<b>9</b>
Supported NXCAM Recording Modes . . . . .	9
System Requirements . . . . .	9
Connections . . . . .	9
<b>3- Workflow Overview</b> . . . . .	<b>10</b>
Creating a Final Cut Pro® Project . . . . .	10
Log and Transfer Overview . . . . .	11
Importing AVCHD Data Files Using Log and Transfer . . . . .	13
Sequence Preparation . . . . .	15
Adding Clips to the Timeline . . . . .	17
<b>4- Project Output</b> . . . . .	<b>18</b>
Blu-ray Disc™ . . . . .	19
High Quality Movie File Export . . . . .	20
HDV™ Video Tape Export . . . . .	21
Output to an HD Recorder via HD-SDI . . . . .	22
<b>5- Notes</b> . . . . .	<b>23</b>

1 – Introduction

2 – Key Workflow Features  
in Final Cut Pro7

3 – Workflow Overview

4 – Project Output

5 – Notes

# 1 – Introduction

The HXR-NX5U is Sony's first NXCAM branded camcorder. This document explains how to edit video recorded by this camcorder using Apple Final Cut Pro.

## HXR-NX5U and the NXCAM Product Line

NXCAM is Sony's newest product line designed for professionals. NXCAM provides powerful features for professional video production, such as HD-SDI output, flexible media selection, and stunning AVCHD picture quality.

The HXR-NX5U camcorder incorporates cutting-edge technologies, such as G Lens, an Exmor™ CMOS sensor, built-in GPS receiver, and a new Active SteadyShot® mode.

## Flexible Selection of Recording Media

Various recording media are available in the HXR-NX5U:

- Memory Stick PRO Duo(Mark2)™ media, Memory Stick PRO-HG Duo™ media, Memory Stick PRO-HG Duo HX™ media\*
- SD/SDHC Memory Card\*\*
- Flash Memory Unit (Sony HXR-FMU128)

\*Compatible "Memory Stick" type: For AVCHD recording / Capacity: more than 1GB, For standard definition recording / Capacity: more than 512MB

\*\*Recommended Speed Class For AVCHD recording / Class 4 or higher, For standard definition recording / Class 2 or higher

## Dual Memory Card Slots

The HXR-NX5U has two memory card media slots for recording. Use of Sony's Memory Stick PRO Duo™ and Memory Stick PRO Duo HG™ media cards are recommended media cards.

The HXR-NX5U records to one memory card slot at a time. With two memory cards installed, the camcorder provides continuous, seamless recording of long scenes, and maximizes the utilization of each card's storage capacity.

As the card in Slot A reaches its capacity, recording is automatically switched to the card in Slot B. The card in Slot A may then be removed and replaced. When the card in Slot B fills to capacity, another seamless switch back to Slot A occurs.

This unique dual slot configuration provides continuous recording.

## HYBRID Recording with the Sony HXR-FMU128

The Sony HXR-FMU128, an optional flash memory recording unit specially designed for the HXR-NX5U, mounts to the camcorder without the need for any external cabling. Built around a 128 GB solid state flash memory drive, the HXR-FMU128 offers significantly longer recording time than a single memory card.

When the HXR-FMU128 is used in conjunction with memory cards, Sony's unique HYBRID recording capability is enabled, allowing a combination of HD and SD resolutions to be recorded simultaneously. The operator is free to choose which resolution is recorded on each media type, and may even set the camcorder to record to both media types simultaneously.

There are many benefits to HYBRID recording, including:

- Edit system ingest time for HD files stored on the HXR-FMU128 is typically faster than from memory cards.
- HD files simultaneously recorded on memory cards provide a time and cost-effective method of archiving.
- SD files may be used for quick preview on a laptop or for SD deliverables, such as web-based movies.

**Note:** Recording SD simultaneously to both media types is not supported.

**Important:** The filenames of corresponding HD and SD clips are different.

## Flexible Recording Format Selection

### HD (AVCHD)

#### Video Compression

- **FX mode** (1920x1080 or 1280x720, 21 Mbps\*)
- **FH mode** (1920x1080 or 1280x720, 16 Mbps)
- **HQ mode** (1440x1080 or 1280x720, 9 Mbps)
- **LP mode** (1440x1080 or 1280x720, 5 Mbps)

\*Including audio and ancillary data the total data rate is 24Mbps

#### Frame Rate, 60i models

- 1080/60i (59.94i)
- 1080/30p (29.97p)
- 1080/24p (23.98p)
- 720/60p (59.94p)

#### Frame Rate, 50i models

- 1080/50i
- 1080/25p
- 720/50p

#### Audio

- Linear PCM (uncompressed)
- AC-3 (compressed)

### SD (MPEG2) Currently not supported in Final Cut Pro or QuickTime®

#### Video Compression

- MPEG2 Program Stream, approx. 9Mbps
- NTSC (720x480) or PAL (720x576)
- 4:3 or 16:9 selectable

#### Frame Rate, 60i models

- 480/60i (59.94i)
- 480/30p scan: 30p scanned image is recorded as 60i
- 480/24p scan: 24p scanned image is recorded as 60i with 2-3 pulldown.

#### Frame Rate, 50i models

- 576/50i
- 576/25p scan: 25p scanned image is recorded as 50i

#### Audio

- AC-3 only

## Recording Time

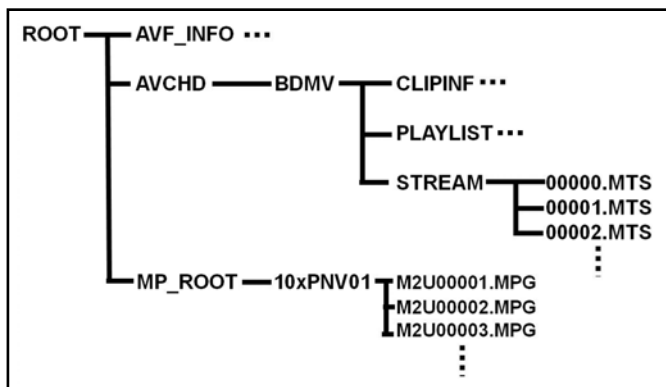
Refer to the charts below to determine the approximate maximum recording time for each media type and quality setting.

HD MOVIE w/Linear PCM 2ch	AVCHD (FX)	AVCHD (FH)	AVCHD (HQ)	AVCHD (LP)
8GB Memory Stick PRO Duo media	40 min	55 min	95 min	150 min
16GB Memory Stick PRO Duo media	85 min	110 min	190 min	300 min
32GB Memory Stick PRO Duo media	170 min	225 min	385 min	605 min
HXR-FMU128 (128GB)	700 min	930 min	1570 min	2490 min

SD Movie w/Dolby Digital 2ch	MPEG2-SD 9M (HQ)
8GB Memory Stick PRO Duo media	115 min
16GB Memory Stick PRO Duo media	235 min
32GB Memory Stick PRO Duo media	475 min
HXR-FMU128 (128GB)	1960 min

## NXCAM Format Folder Structure and File Names

Below is a brief overview of the folder structure and file naming conventions recorded on memory cards or the optional HXR-FMU128 flash memory recorder.



**.MTS file**

This is the high quality AVCHD video stream data. During long recordings, the clip is automatically divided (spanned) into 2GB segments. Spanned files are seamlessly merged while transferring to Final Cut Pro via the Log & Transfer window.

**.MPG file**

This is the SD quality MPEG2 file. During long recordings, the clip is automatically divided (spanned) into 2GB segments.

**Note:** Final Cut Pro does not currently support MPEG2 files in the timeline.

**AVF\_INFO, MEMSICK.IND**

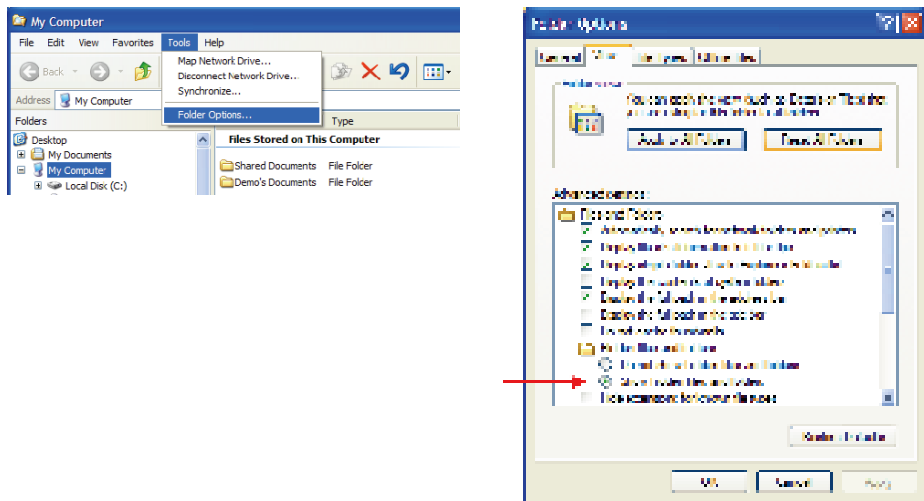
These folders/files are administrative in nature.

**Important:** Do not move or copy individual clips via Windows Explorer® or the Macintosh® Finder, as this will result in unusable media on the target drive.

For copying individual clips to hard disk, use the Sony Content Management Utility (CMU).

Windows Explorer or the Macintosh Finder may be used to do an archive of the entire contents of either a memory card or HXR-FMU128, as long as all ancillary and hidden files are included in the transfer.

When archiving on a Windows system (or a Windows boot on a Macintosh computer), always select “Show hidden files and folders” in the Folder Options “View” tab, as shown below.



## Archiving Original NXCAM Media

Final Cut Pro7 imports clips from either memory card or HXR-FMU128 via the integrated **Log and Transfer** utility. Upon ingest, the camera-native AVCHD clips are automatically converted to a user-selectable Apple ProRes422 format, and spanned clips are seamlessly joined.

**Performing an archive of all camera-original material is highly recommended.**

**Copying individual clips via Windows Explorer or the Macintosh Finder will result in unusable media on the target drive. When archiving the contents of either a memory card or HXR-FMU128, always copy the entire contents of the volume, including all ancillary files, as outlined below.**

## Archiving Example

When working with multiple memory cards and/or cameras, an organized archival workflow should be employed. Below is a typical workflow for archiving NXCAM media:

- 1 – After shooting with a memory card, provide a unique physical label, such as “091231-CAM1-1”, which is the date, camera number, and card number.
- 2 – Load the memory card in a card reader connected to your computer.
- 3 – When using the Windows OS, always choose the “Show hidden files and folders” option located in the Folder Options pane ( Start > Control Panel > Folder Options > View).
- 4 – Make a new folder in the storage drive. Rename the folder to match the project name, such as “Holiday Event.”
- 5 – Inside the above folder, create a child folder. Rename that folder to match the label on the memory card, in this example: “091231-CAM1-1”.
- 6 – Copy all data including the hidden folders/files from the memory card to the child folder.
- 7 – Repeat the above for all subsequent cards (omit Step 4), providing unique label/folder names for each memory card. For example, the second card from the same camera could be labeled “091231-CAM1-2”.

**Note:** The same procedure should be followed when using the HXR-FMU128



---

## 2 – Key workflow features in Final Cut Pro7

### Supported NXCAM Recording Modes

The following NXCAM recording modes are supported:

- AVCHD: 1080 50i/60i/24p/25p/30p, 720 50p/60p

### System Requirements

- Apple OS X 10.5.6+
- Apple Final Cut Pro7 (included in Final Cut Studio 3.0 package)  
For more details about Final Cut Pro, please visit the Apple website.
- USB 2.0 connection
- NXCAM compatible memory cards
- HXR-FMU128 (optional)

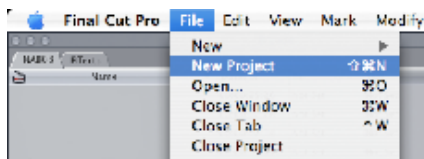
### Connections

- When using memory cards, connect a generic USB 2.0 memory card reader to your computer. The file transfer speed may vary based on the card reader's specifications and connection method. A direct connection (not through a USB hub) is recommended.
- When using the Sony HXR-FMU128, connect via a USB 2.0 compatible cable. As with the memory card reader, a direct connection to the computer is recommended.

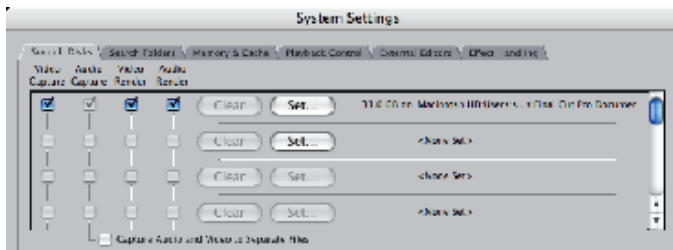
## 3 – Workflow Overview

### Creating a Final Cut Pro Project

- 1 – Launch the Final Cut Pro application.
- 2 – If not adding any video material to an existing FCP Project, create a new Project by simultaneously pressing **⌘ + Shift + N**. Alternatively, use the mouse to select **File > New Project**. This will create a new project initially entitled “Untitled Project”.



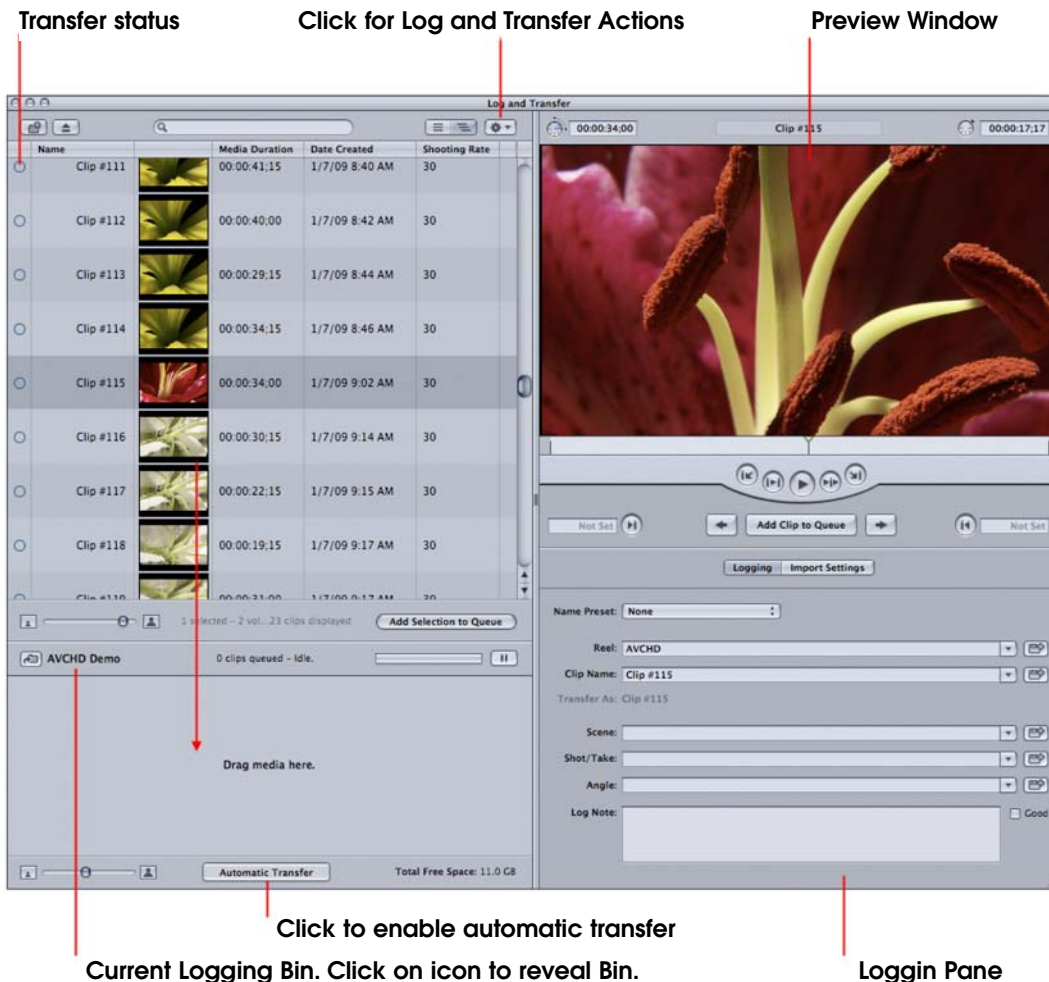
- 3 – Save the Project to the computer hard drive. The standard location for this is in the /Users/username/Documents/Final Cut Pro Documents/ folder. During the Save process, change “Untitled Project” to something meaningful.
- 4 – Verify the FCP Scratch Disk location and set according to your preference. Press **Shift + Q** to access this menu.



**Note:** The previous step is not an essential part of AVCHD import, but is recommended as a “best practice” of media management.

## Log and Transfer Overview

Final Cut Pro requires that AVCHD clips be converted to ProRes422 QuickTime Movie files and copied (typically) to the designated Capture Scratch location. This is accomplished with Final Cut Pro's integrated **Log and Transfer** tool. A brief overview of the interface is below.



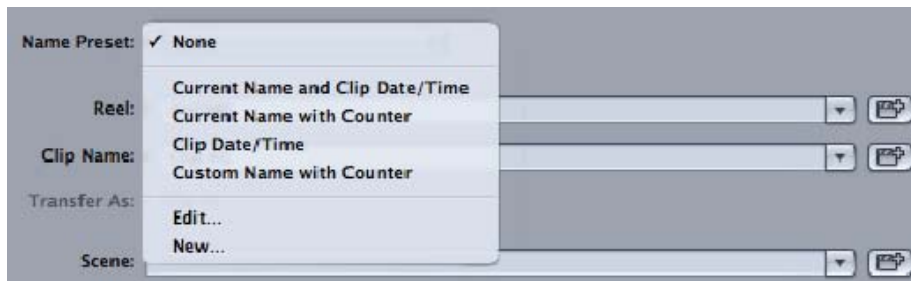
**Log and Transfer** provides native support for AVCHD without the need for any additional plugin software.

**Log and Transfer** automatically scans for connected media, and displays clips in the Clip List. Alternatively, archived NXCAM media folders may be mounted by clicking the "Add Volume" button, located at the top left corner of the window.

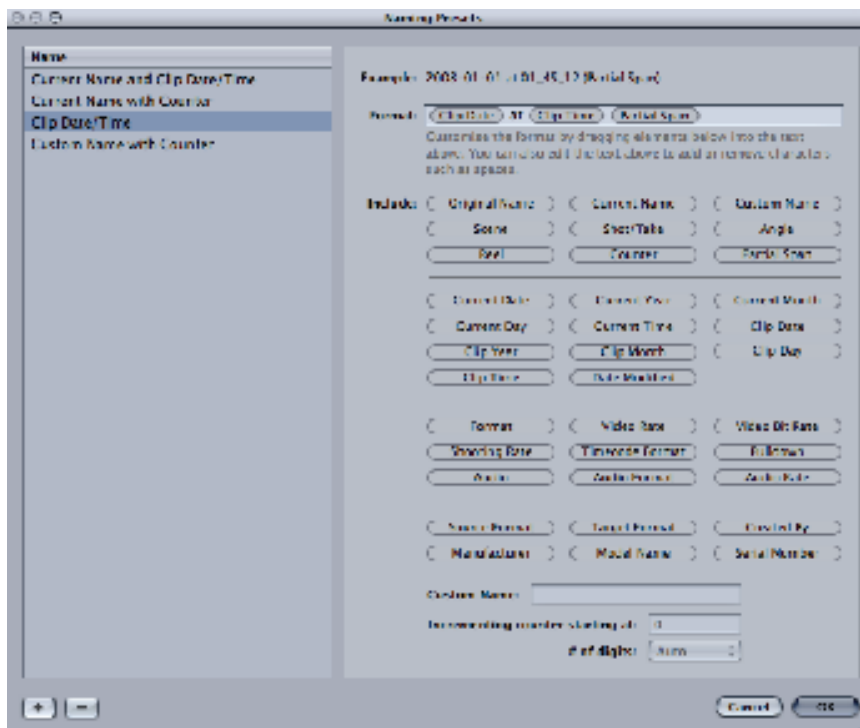
Prior to transfer, additional logging information may be entered for a clip, along with preferences for Video and Audio import. The Preview Window is also available to set IN/OUT points for partial clip transfer.

As part of the transfer operation, Final Cut Pro7 can use the embedded clip metadata to create custom file names. Custom names are typically more recognizable to the user than the NXCAM-generated file names.

Custom names are set and/or selected via the Logging pane's **Name Preset** drop list.



Select a Preset from the list, or choose “Edit” or “New” to create a custom setting. **The Naming Presets** window will open.



To create a custom preset, drag metadata labels from the “Include:” pane to the “Format” line. If the camera-original NXCAM file contains the corresponding metadata, the file name of the converted ProRes clip will be set to match.

For more detailed information, please consult the Final Cut Pro7 Operations Guide

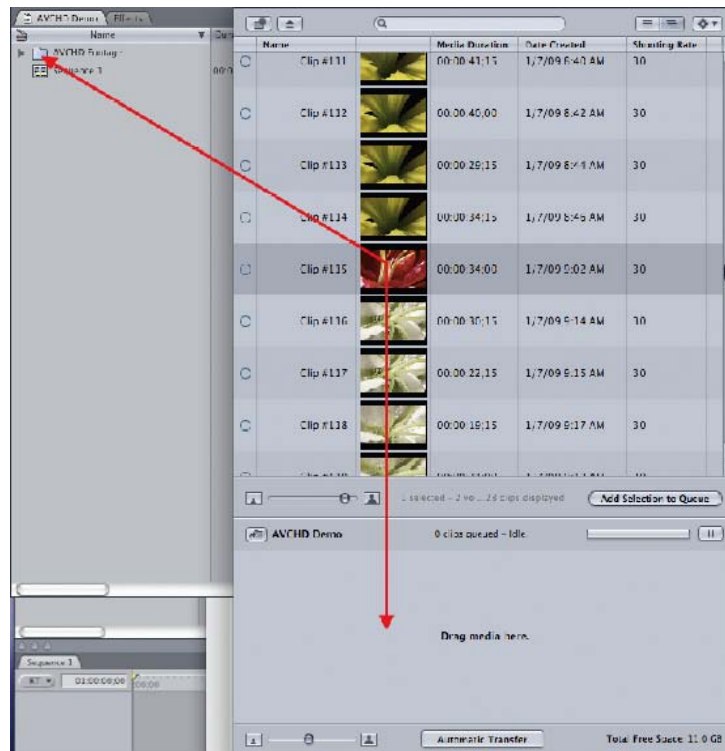
## Importing AVCHD Data Files Using Log and Transfer

**Log and Transfer** automatically scans for the presence of mounted card media (or the HXR-FMU128), and displays clips in the **Clip List**. Additional AVCHD media folders (such as those created when archiving from card to hard disc) may be added to the Clip List by selecting the **Add Folder** button, located in the top left corner of the window.

Prior to transfer, logging data may be entered for a clip, along with preferences for Video and Audio import.

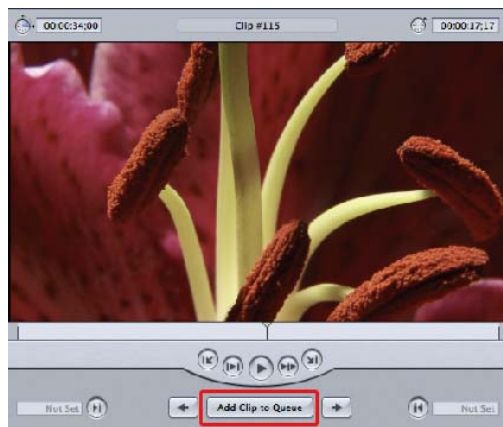
Upon transfer, the clips are automatically wrapped as QuickTime.

- 1 – Select **Log and Transfer** from Final Cut Pro's **File** drop menu, or by pressing **⌘ + Shift + 8**.
- 2 – To import a clip(s), select and drag either to:
  - The Import Queue below, which registers the clips in the selected Logging Bin of the Final Cut Pro project.
  - Directly to a specific Bin.



To create and import a subclip, do the following:

- 1 – Select a clip from the Clip List.
- 2 – Navigate the clip in the Preview Window.
- 3 – Set In and Out points.
- 4 – Click the **Add Clip to Queue** button.

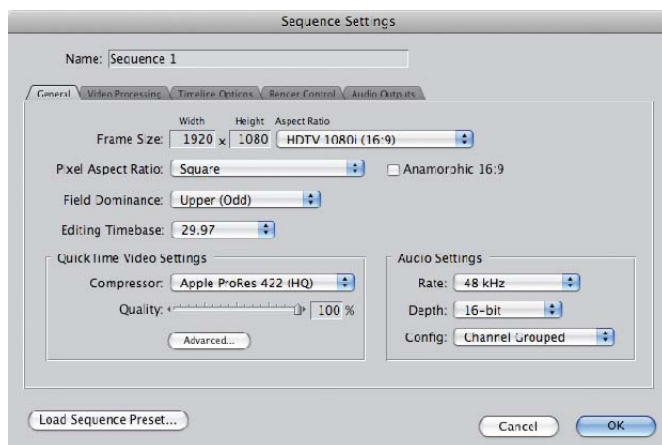


## Sequence Preparation

Although not mandatory, it is typically best to set the FCP Sequence Settings to match the clip settings associated with the majority of your media; putting less demand on the computer's CPU and reducing rendering time. As mentioned in the previous section, NXCAM-native AVCHD files are converted to a user-defined Apple ProRes format during import.

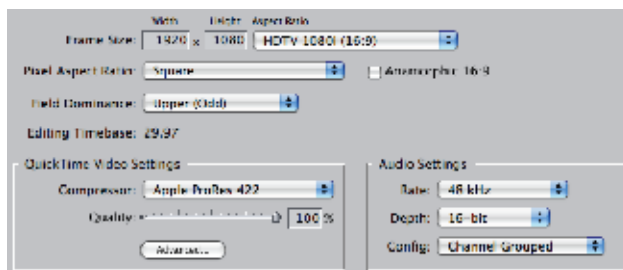
To verify/alter Final Cut Pro's Sequence Settings, do the following:

- 1 – From within the Final Cut Pro Browser, select the default Sequence (Sequence 1), or create a new Sequence by pressing **⌘ + N**.
- 2 – From the Sequence drop menu, select **Settings**.

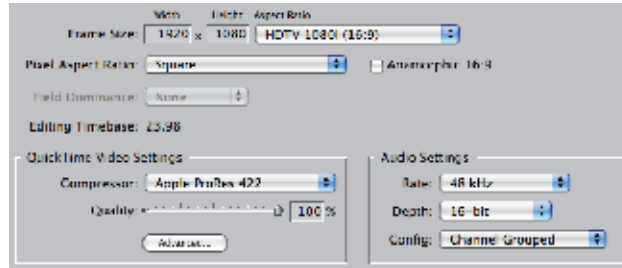


- 3 – Adjust the settings for Frame Size, Pixel Aspect, Compressor, etc. to match the majority of the project's media. Typical settings for NXCAM media are as follows:

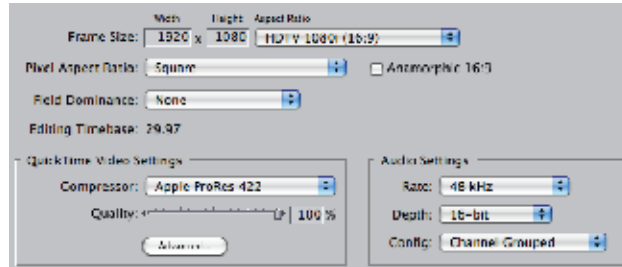
For 1080/60i media:



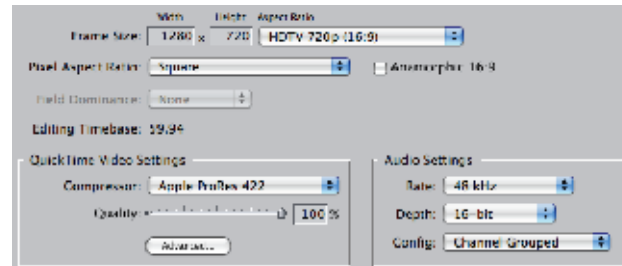
For 1080/24p media:



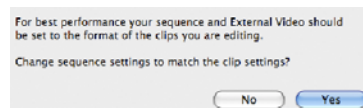
For 1080/30p media:



For 720/60p media:



- 4 – If unsure of the proper settings to use, FCP will configure the Sequence automatically. For empty Sequences only, FCP analyzes the first clip that is entered in the Timeline and compares it against the current Sequence Settings. If there is a mismatch, the following will be displayed:



In most cases, select **Yes**.



## Adding Clips to the Timeline

There are a variety of methods for placing clips in the Timeline. For purposes of illustration, below are just a few methodologies:

To add a clip to a Sequence without trimming, simply drag the clip from the Bin to the Timeline.

To trim a clip prior to adding it to the Sequence:

- 1 – Double-click on a clip in the Browser. This will load the media into the Viewer window.
- 2 – Play the clip by pressing either the spacebar or the L key.
- 3 – Select the yellow Viewer Playhead and scrub to an exact In point. Press I to mark the In point.
- 4 – Select the yellow Viewer Playhead and scrub to an exact Outpoint. Press O to mark the Outpoint.
- 5 – Click and drag the image in the Viewer over to the Canvas window. (Notice that a thumbnail image appears under the cursor) An Edit Overlay will appear in the Canvas.



- 6 – Continue dragging the thumbnail onto the red "Overwrite" section of the overlay, then release. The clip will be added to the Timeline.

For more detailed information, please consult the Final Cut Pro7 Operations Guide

---

## 4 – Project Output

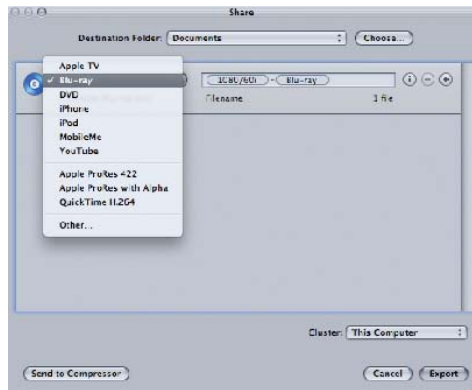
The finished project may be output in a variety of ways.

- To Blu-ray Disc
- To a high quality movie file
- To an HDV video tape
- To an HD recorder via HD-SDI

A general overview of the output process for each of the above follows on the next few pages. For more detailed information, please refer to the Final Cut Pro7 Operations Guide and/or the Operations Guide for the specific output device or interface.

## Blu-ray Disc

1 – Select **File > Share**. The **Share** window will open.



2 – Choose “Blu-ray” and check the “Create Blu-ray disc” option.

3 – Confirm the Output Device and other settings, as appropriate, for the project.



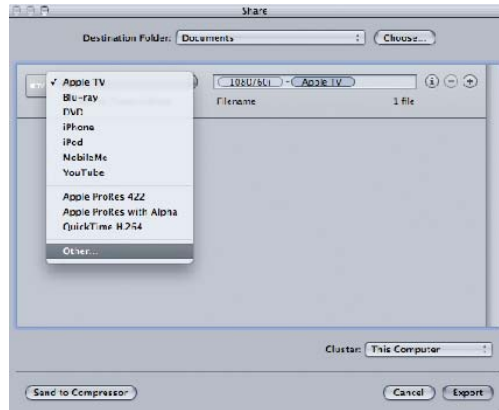
4 – Insert a blank BD-R/BD-RE disc into the drive.

5 – Click **Export**.

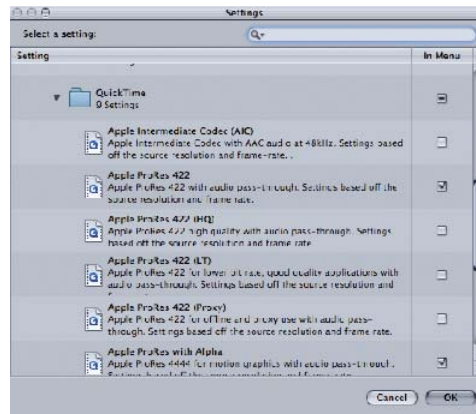
## High Quality Movie File Export

Final Cut Pro supports the creation of high quality movie files in QuickTime format, as well as movies compatible with the iPod and YouTube.

- 1 – Select **File > Share**. The Share window will open.



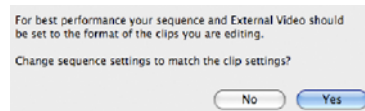
- 2 – Choose “Other” from the drop-down list. The Setting window will open.



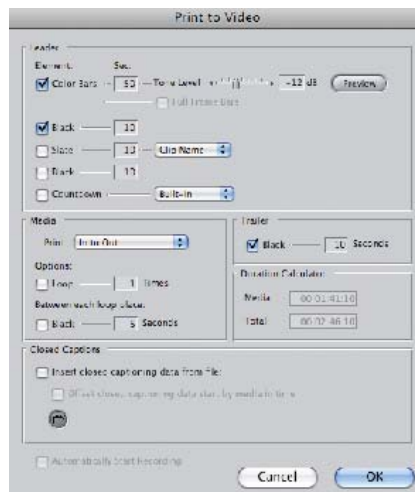
- 3 – Select an appropriate preset, then click **OK**.
- 4 – If the selected preset includes any options, set the check boxes as required.
- 5 – Select a destination for the file(s).
- 6 – Click **Export**.

## HDV Video Tape Export

- 1 – Connect an HDV deck to the computer with an i.LINK® cable.
- 2 – Select **File > Export > QuickTime Movie**.
- 3 – Choose an HDV preset from the Setting drop-down list.
- 4 – Specify the destination folder and output file name.
- 5 – Click **Save**. A Final Cut Pro movie file will be created in the HDV format.
- 6 – Create a new sequence in the current project.
- 7 – Import the created movie file to the project.
- 8 – Drag the movie file to the timeline. Final Cut Pro may prompt with the following message:



- 9 – Click **Yes**.
- 10 – Select **File > Print to Video**.
- 11 – Choose options to suite the particular project.



- 12 – Click **OK**.

## Output to an HD Recorder via HD-SDI

Final Cut Pro is compatible with several series of HD-SDI card interface cards, supporting high quality output of the project timeline to an HD deck, such as XDCAM HD<sup>®</sup>, HDCAM<sup>®</sup> etc.

The procedures for output vary with the specific interface product installed. Please refer to the operations guides of the specific interface product and/or the Final Cut Pro Operations Guide for detailed setup and operational procedures.

---

## 5 – Notes